



# Certificate of Analysis

Powered by Con dent Cannabis

Sample provided to the laboratory by the client and tested as received.

1 of 2

## MMJ Capital Investment Group

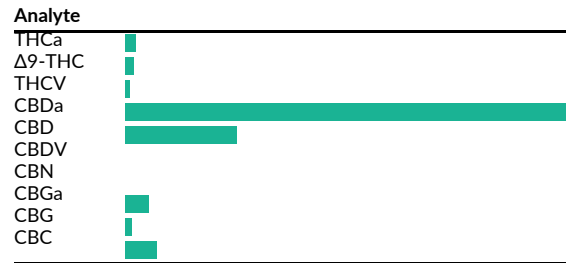
Yamhill, OR 97148  
mmjcig@gmail.com  
(424) 299-7271  
Lic. #

## Red Bordeaux Flower

## Sample: 2106CH0038.0194

Strain: Red Bordeaux  
Batch#: ; Batch Size: g  
Sample Received: 06/07/2025; Report Created: 07/01/2025  
Harvest/Production Date:  
Sampling: Random; Environment: Room Temp

Plant, Flower - Cured, Outdoor  
HarvestProcessLot::METRCBatch::METRCSample:



## Cannabinoids

Pass

397HPLC6 202106088-1  
06/08/2025 | METRCHCRPD Status: Not Tested ; METRC CBD RPD Status: Not Tested

**0.27%**

Total THC\* (Calculated Decarboxylated Potential)

**11.31%**

Total CBD\*\* (Calculated Decarboxylated Potential)

**14.26%**

Total Cannabinoids Analyzed

Moisture **7.6%**  
Limit 0.655 Limit

Water Activity **NR**  
Limit 0.655 Limit

Microbial Potential

Analyte	THCa	LOQ	Mass	Mass
		mg/g	%	mg/g
THCa		0.5	0.20	2.0
Δ9-THC		0.5	0.09	0.9
THCV		0.5	0.05	0.5
CBDa		0.5	10.02	100.2
CBD		0.5	2.52	25.2
CBDV		0.5	<LOQ	<LOQ
CBN		0.5	<LOQ	<LOQ
CBGa		0.5	0.51	5.1
CBG		0.5	0.14	1.4
CBC		0.5	0.71	7.1
<b>Total</b>			<b>14.24</b>	<b>142.4</b>

Method: CH SOP 4400  
\*Total THC = THCa \* 0.877 + d9-THC. \*\*Total CBD = CBDa \* 0.877 + CBD. LOQ = Limit of Quantitation; NR = Not Reported; ND = Not Detected  
>ULOQ = above upper LOQ. ULOQ for pre-harvest hemp = 5% and 4% for CannaZoom Concentrates.



5691 SE International Way  
Portland, OR  
(503) 305-5252  
http://chemhistory.com  
Lic# OLCC 010-1002015CA5E ORELAP 4057

Patrick Trujillo  
Technical Director

Con dent Cannabis  
All Rights Reserved  
support@con dentcannabis.com  
(866) 506-5866  
www.con dentcannabis.com





# Certificate of Analysis

Powered by Con dent Cannabis  
2 of 2

## MMJ Capital Investment Group

Yamhill, OR 97148  
mmjcig@gmail.com  
(424) 299-7271  
Lic. #

## Red Bordeaux Flower

Sample: 2106CH0038.0194

Strain: Red Bordeaux  
Batch#: ; Batch Size: g  
Sample Received: 06/07/2025; Report Created: 07/01/2025  
Harvest/Production Date:  
Sampling: Random; Environment: Room Temp

Plant, Flower - Cured, Outdoor  
HarvestProcessLot::METRCBatch::METRCSample:



## Quality Control Data

Analytical Batch ID	QC Sample ID	Assay Name	QC Category Name
397HPLC6 202106088-1	P06072122F	Cannabinoids	Sample Duplicate

QC Notes  
None

Compound	Blank	LCS Result	LCS (Expected)	LOQ	Matrix Duplicate	Sample Matrix	LCS % Rec.	Acceptance Criteria	Units
THCa	0.01	6.31	5.96	0.04	32.1	32.6	105.872	80%-120%	%
Δ9-THC	0.02	4.95	5.15	0.04	0.61	0.66	96.117	80%-120%	%
CBDa	0	3.41	3.5	0.04	0.08	0.09	97.429	80%-120%	%
CBD	0	2.78	2.9	0.04	0	0	95.862	80%-120%	%



5691 SE International Way  
Portland, OR  
(503) 305-5252  
<http://chemhistory.com>  
Lic# OLCC 010-1002015CA5E ORELAP 4057

Con dent Cannabis  
All Rights Reserved  
support@con dentcannabis.com  
(866) 506-5866  
[www.con dentcannabis.com](http://www.con dentcannabis.com)



Values reported relate only to the product tested. ChemHistory makes no claims as to the consumer safety or other risks associated with any detected or non-detected levels of any pesticides or residual solvents. This Certificate shall not be reproduced except in full, without the written approval of ChemHistory. ORELAP accredited ID#4057 and OLCC Licensed Cannabis Testing Laboratory #010-1002015CA5E.